

Please visit
www.babybrezza.ca
For instructional video, tips & more.

This product may be covered under one or more of the following including U.S. Patent No. 8,584,901 and pending patent application(s) in the U.S. and other countries.

©2017 Baby Brezza® Enterprises LLC
DISTRIBUTED BY: ISSI INC.
4500 THIMENS BLVD
SUITE 100, SAINT-LAURENT
(QC) H4R 2P2
T:514-344-3045 F:514-344-3296
service@issibaby.ca 1-800-667-4111
MADE IN CHINA

Important Safeguards

When using electrical appliances, basic safety precautions should always be followed, including the following:

1. Read all instructions before using.
2. Do not touch hot surfaces.
3. To protect against electric shock and injury to persons do not immerse cord, plug, water tank or appliance in water or other liquid.
4. Close supervision is necessary when any appliance is used near children.
5. Unplug from outlet when not in use and before cleaning. Allow to cool before inserting or removing parts, and before cleaning the appliance.
6. Do not operate this appliance with a damaged cord or plug. If the appliance malfunctions or has been damaged in any manner, contact ISSI at 1-800-667-4111 or by e-mail at: service@issibaby.ca
7. The use of accessory attachments not recommended by the appliance manufacturer may cause fire, electric shock or injury.
8. Use on level surface and be sure there is no debris under the unit and the rubber pads are touching the surface.
9. Household use only. Do not use outdoors.
10. Do not let cord hang over edge of table or counter, or touch hot surfaces.
11. Do not place on or near hot gas or electric burner, or in a heated oven.
12. Do not use appliance for other than intended use.
13. Do not attempt to use the machine without water in the water tank.
14. This appliance has a polarized plug (one blade wider than the other). To reduce risk of electric shock, this plug is intended to fit into a polarized outlet only one way. If the plug does not fit fully into the outlet, reverse the plug. If it still does not fit, contact a qualified electrician. Do not attempt to modify the plug in any way.
15. Make sure machine is turned off before unplugging.
16. A short power-supply cord is provided to reduce risks of becoming entangled in or tripping over a longer cord. Longer detachable power-supply cords or extension cords are available and may be used if care is exercised in their use. If using the machine with an extension cord, make sure the cord is the proper electrical rating for the machine. The extension cord should be arranged so that it does not drape over countertop or tabletop where it can be pulled on by children or tripped over unintentionally.
17. Before serving make sure formula mixture is at safe temperature for baby.
18. Avoid contact with moving parts. Never remove powder container, powder container lid, funnel or water tank while machine is in operation.
19. Do not disassemble.

Warning:

For infants less than 6 months old, always use bottled water suitable for infant formula preparation. Tap water and/or unsterilized baby bottles can potentially lead to adverse effects for the health of your baby. Only prepare one bottle at a time, feed immediately and follow all instructions carefully. Do not keep leftover formula mix. Always hold baby while feeding. Leaving baby unattended may cause choking.

TECHNICAL DATA Supply voltage: 120V ~ 60Hz	Model: FRP0045 Current: 2.5A	Heater Power: 250W Motor Power: 20W
--	---------------------------------	--

Save these instructions

Set up - Before First Use

Wash: Funnel, Funnel Cover, Inside of Water Tank, and all Powder Container parts. (see page 2). **Do not put the Powder Container or any of the Powder Container parts in the dishwasher.**
After washing, make sure all Powder Container parts are COMPLETELY DRY before assembly.

Assemble: Select measuring insert by powder type. See next page for details.

Inserts are numbered 1, 3, 4 and 5. Do not use the Measuring Wheel without an insert.

Place Powder Container on top of Base and Insert Measuring Wheel.

Insert Locking Cover and turn to lock under tabs in Powder Container.

Make sure Silicone Scraper is installed correctly and does not protrude through the hole in the powder container after assembly. See separate Silicone Scraper instructions for more details.

After steps 2 & 3 Turn the Measuring Wheel to the position shown at left, with the small arrows on the Measuring Wheel & Powder Container aligned.

Insert Stirring Wheel.

Place Lid as shown below. Turn to lock. **don't add powder.** make sure tab on lid is on the back corner of machine.

Rinse internal parts: With Powder Container assembled follow these steps to rinse internal parts. **don't add powder.**

Fill Water Tank to MAX line with room temp. Purified Water.

Choose 300 ml (10 oz) size by pressing ml/oz button 4 times.

Place 300 ml or larger container to catch water. Press start (green) to begin rinsing.

Plug in machine and turn power switch to ON position.

The machine will stop after dispensing 300 ml (10oz) of water. Dispose of the water captured in the container. The Formula pro® is now ready to use. Follow the instructions on pages 5 & 6 for bottle preparation.

The machine will stop after dispensing 300 ml (10oz) of water. Dispose of the water captured in the container. The Formula pro® is now ready to use. Follow the instructions on pages 5 & 6 for bottle preparation.

The machine will stop after dispensing 300 ml (10oz) of water. Dispose of the water captured in the container. The Formula pro® is now ready to use. Follow the instructions on pages 5 & 6 for bottle preparation.

The machine will stop after dispensing 300 ml (10oz) of water. Dispose of the water captured in the container. The Formula pro® is now ready to use. Follow the instructions on pages 5 & 6 for bottle preparation.

The machine will stop after dispensing 300 ml (10oz) of water. Dispose of the water captured in the container. The Formula pro® is now ready to use. Follow the instructions on pages 5 & 6 for bottle preparation.

The machine will stop after dispensing 300 ml (10oz) of water. Dispose of the water captured in the container. The Formula pro® is now ready to use. Follow the instructions on pages 5 & 6 for bottle preparation.

The machine will stop after dispensing 300 ml (10oz) of water. Dispose of the water captured in the container. The Formula pro® is now ready to use. Follow the instructions on pages 5 & 6 for bottle preparation.

The machine will stop after dispensing 300 ml (10oz) of water. Dispose of the water captured in the container. The Formula pro® is now ready to use. Follow the instructions on pages 5 & 6 for bottle preparation.

The machine will stop after dispensing 300 ml (10oz) of water. Dispose of the water captured in the container. The Formula pro® is now ready to use. Follow the instructions on pages 5 & 6 for bottle preparation.

The machine will stop after dispensing 300 ml (10oz) of water. Dispose of the water captured in the container. The Formula pro® is now ready to use. Follow the instructions on pages 5 & 6 for bottle preparation.

The machine will stop after dispensing 300 ml (10oz) of water. Dispose of the water captured in the container. The Formula pro® is now ready to use. Follow the instructions on pages 5 & 6 for bottle preparation.

The machine will stop after dispensing 300 ml (10oz) of water. Dispose of the water captured in the container. The Formula pro® is now ready to use. Follow the instructions on pages 5 & 6 for bottle preparation.

The machine will stop after dispensing 300 ml (10oz) of water. Dispose of the water captured in the container. The Formula pro® is now ready to use. Follow the instructions on pages 5 & 6 for bottle preparation.

The machine will stop after dispensing 300 ml (10oz) of water. Dispose of the water captured in the container. The Formula pro® is now ready to use. Follow the instructions on pages 5 & 6 for bottle preparation.

The machine will stop after dispensing 300 ml (10oz) of water. Dispose of the water captured in the container. The Formula pro® is now ready to use. Follow the instructions on pages 5 & 6 for bottle preparation.

The machine will stop after dispensing 300 ml (10oz) of water. Dispose of the water captured in the container. The Formula pro® is now ready to use. Follow the instructions on pages 5 & 6 for bottle preparation.

The machine will stop after dispensing 300 ml (10oz) of water. Dispose of the water captured in the container. The Formula pro® is now ready to use. Follow the instructions on pages 5 & 6 for bottle preparation.

The machine will stop after dispensing 300 ml (10oz) of water. Dispose of the water captured in the container. The Formula pro® is now ready to use. Follow the instructions on pages 5 & 6 for bottle preparation.

The machine will stop after dispensing 300 ml (10oz) of water. Dispose of the water captured in the container. The Formula pro® is now ready to use. Follow the instructions on pages 5 & 6 for bottle preparation.

The machine will stop after dispensing 300 ml (10oz) of water. Dispose of the water captured in the container. The Formula pro® is now ready to use. Follow the instructions on pages 5 & 6 for bottle preparation.

The machine will stop after dispensing 300 ml (10oz) of water. Dispose of the water captured in the container. The Formula pro® is now ready to use. Follow the instructions on pages 5 & 6 for bottle preparation.

The machine will stop after dispensing 300 ml (10oz) of water. Dispose of the water captured in the container. The Formula pro® is now ready to use. Follow the instructions on pages 5 & 6 for bottle preparation.

The machine will stop after dispensing 300 ml (10oz) of water. Dispose of the water captured in the container. The Formula pro® is now ready to use. Follow the instructions on pages 5 & 6 for bottle preparation.

The machine will stop after dispensing 300 ml (10oz) of water. Dispose of the water captured in the container. The Formula pro® is now ready to use. Follow the instructions on pages 5 & 6 for bottle preparation.

The machine will stop after dispensing 300 ml (10oz) of water. Dispose of the water captured in the container. The Formula pro® is now ready to use. Follow the instructions on pages 5 & 6 for bottle preparation.

The machine will stop after dispensing 300 ml (10oz) of water. Dispose of the water captured in the container. The Formula pro® is now ready to use. Follow the instructions on pages 5 & 6 for bottle preparation.

The machine will stop after dispensing 300 ml (10oz) of water. Dispose of the water captured in the container. The Formula pro® is now ready to use. Follow the instructions on pages 5 & 6 for bottle preparation.

The machine will stop after dispensing 300 ml (10oz) of water. Dispose of the water captured in the container. The Formula pro® is now ready to use. Follow the instructions on pages 5 & 6 for bottle preparation.

The machine will stop after dispensing 300 ml (10oz) of water. Dispose of the water captured in the container. The Formula pro® is now ready to use. Follow the instructions on pages 5 & 6 for bottle preparation.

The machine will stop after dispensing 300 ml (10oz) of water. Dispose of the water captured in the container. The Formula pro® is now ready to use. Follow the instructions on pages 5 & 6 for bottle preparation.

The machine will stop after dispensing 300 ml (10oz) of water. Dispose of the water captured in the container. The Formula pro® is now ready to use. Follow the instructions on pages 5 & 6 for bottle preparation.

The machine will stop after dispensing 300 ml (10oz) of water. Dispose of the water captured in the container. The Formula pro® is now ready to use. Follow the instructions on pages 5 & 6 for bottle preparation.

The machine will stop after dispensing 300 ml (10oz) of water. Dispose of the water captured in the container. The Formula pro® is now ready to use. Follow the instructions on pages 5 & 6 for bottle preparation.

The machine will stop after dispensing 300 ml (10oz) of water. Dispose of the water captured in the container. The Formula pro® is now ready to use. Follow the instructions on pages 5 & 6 for bottle preparation.

The machine will stop after dispensing 300 ml (10oz) of water. Dispose of the water captured in the container. The Formula pro® is now ready to use. Follow the instructions on pages 5 & 6 for bottle preparation.

The machine will stop after dispensing 300 ml (10oz) of water. Dispose of the water captured in the container. The Formula pro® is now ready to use. Follow the instructions on pages 5 & 6 for bottle preparation.

The machine will stop after dispensing 300 ml (10oz) of water. Dispose of the water captured in the container. The Formula pro® is now ready to use. Follow the instructions on pages 5 & 6 for bottle preparation.

The machine will stop after dispensing 300 ml (10oz) of water. Dispose of the water captured in the container. The Formula pro® is now ready to use. Follow the instructions on pages 5 & 6 for bottle preparation.

The machine will stop after dispensing 300 ml (10oz) of water. Dispose of the water captured in the container. The Formula pro® is now ready to use. Follow the instructions on pages 5 & 6 for bottle preparation.

The machine will stop after dispensing 300 ml (10oz) of water. Dispose of the water captured in the container. The Formula pro® is now ready to use. Follow the instructions on pages 5 & 6 for bottle preparation.

The machine will stop after dispensing 300 ml (10oz) of water. Dispose of the water captured in the container. The Formula pro® is now ready to use. Follow the instructions on pages 5 & 6 for bottle preparation.

The machine will stop after dispensing 300 ml (10oz) of water. Dispose of the water captured in the container. The Formula pro® is now ready to use. Follow the instructions on pages 5 & 6 for bottle preparation.

The machine will stop after dispensing 300 ml (10oz) of water. Dispose of the water captured in the container. The Formula pro® is now ready to use. Follow the instructions on pages 5 & 6 for bottle preparation.

The machine will stop after dispensing 300 ml (10oz) of water. Dispose of the water captured in the container. The Formula pro® is now ready to use. Follow the instructions on pages 5 & 6 for bottle preparation.

The machine will stop after dispensing 300 ml (10oz) of water. Dispose of the water captured in the container. The Formula pro® is now ready to use. Follow the instructions on pages 5 & 6 for bottle preparation.

The machine will stop after dispensing 300 ml (10oz) of water. Dispose of the water captured in the container. The Formula pro® is now ready to use. Follow the instructions on pages 5 & 6 for bottle preparation.

The machine will stop after dispensing 300 ml (10oz) of water. Dispose of the water captured in the container. The Formula pro® is now ready to use. Follow the instructions on pages 5 & 6 for bottle preparation.

The machine will stop after dispensing 300 ml (10oz) of water. Dispose of the water captured in the container. The Formula pro® is now ready to use. Follow the instructions on pages 5 & 6 for bottle preparation.

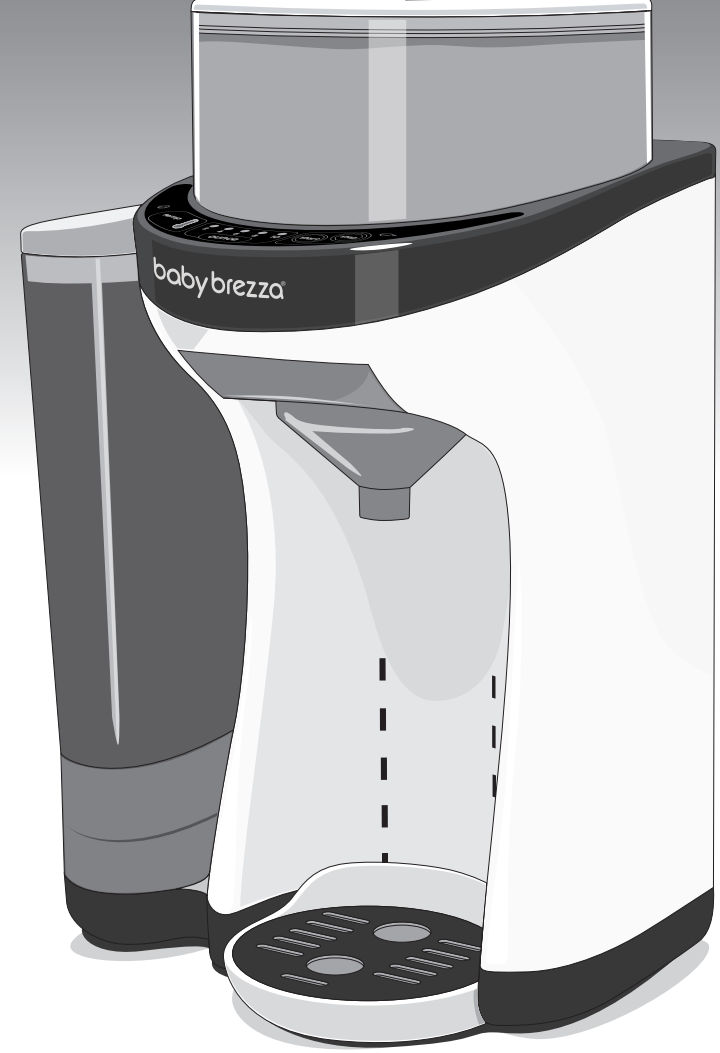
The machine will stop after dispensing 300 ml (10oz) of water. Dispose of the water captured in the container. The Formula pro® is now ready to use. Follow the instructions on pages 5 & 6 for bottle preparation.

The machine will stop after dispensing 300 ml (10oz) of water. Dispose of the water captured in the container. The Formula pro® is now ready to use. Follow the instructions on pages 5 & 6 for bottle preparation.

The machine will stop after dispensing 300 ml (10oz) of water. Dispose of the water captured in the container. The Formula pro® is now ready to use. Follow the instructions on pages 5 & 6 for bottle preparation.

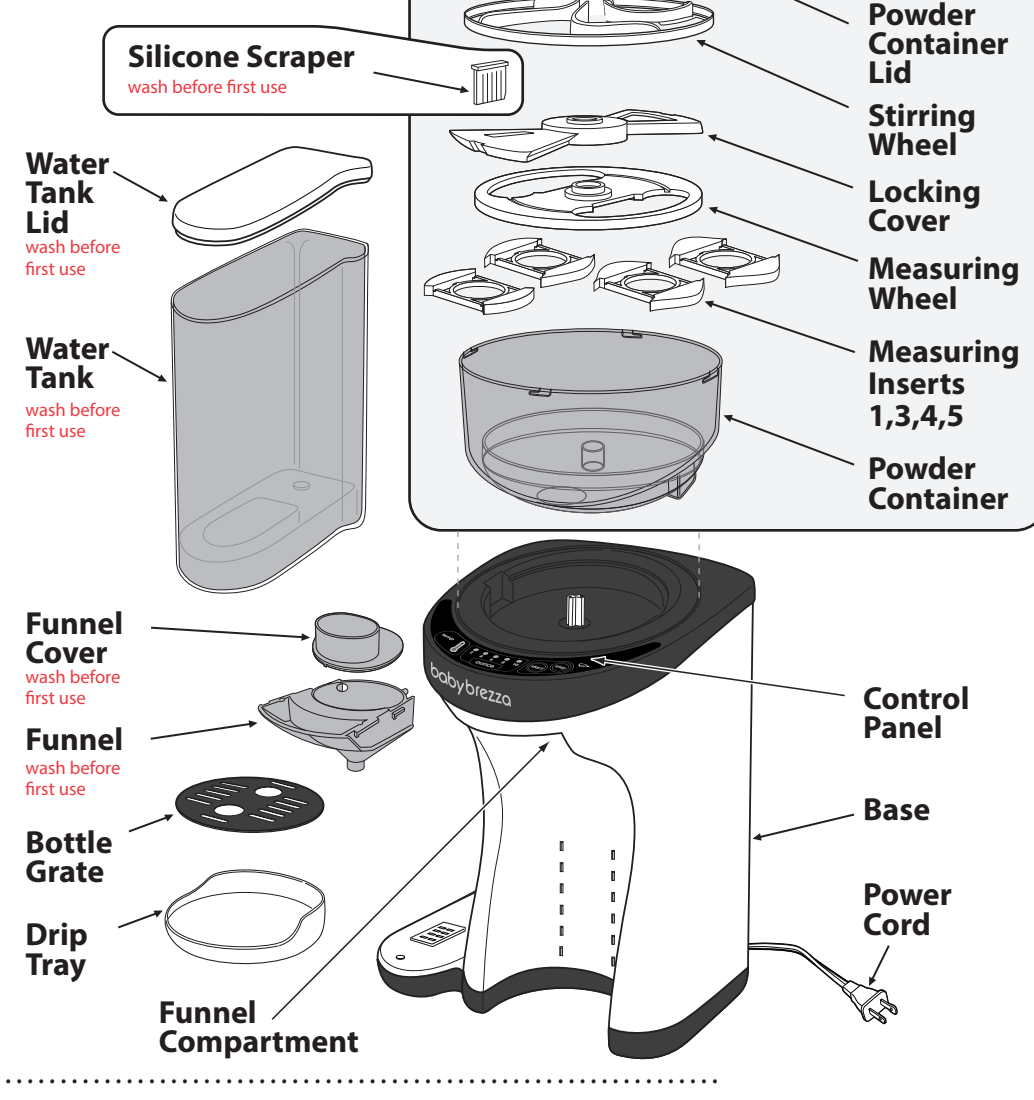
The machine will stop after dispensing 300 ml (10oz) of water. Dispose of the water captured in the container. The Formula pro® is now ready to use. Follow the instructions on pages 5 & 6 for bottle preparation.

Formula Pro®

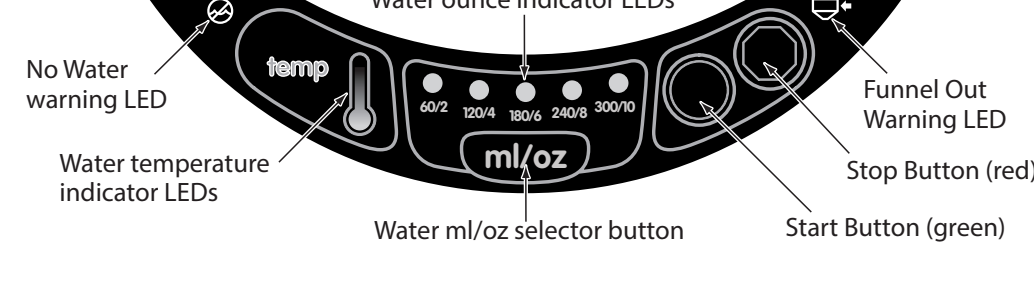


Instructions

Components



Controls & Indicator Lights



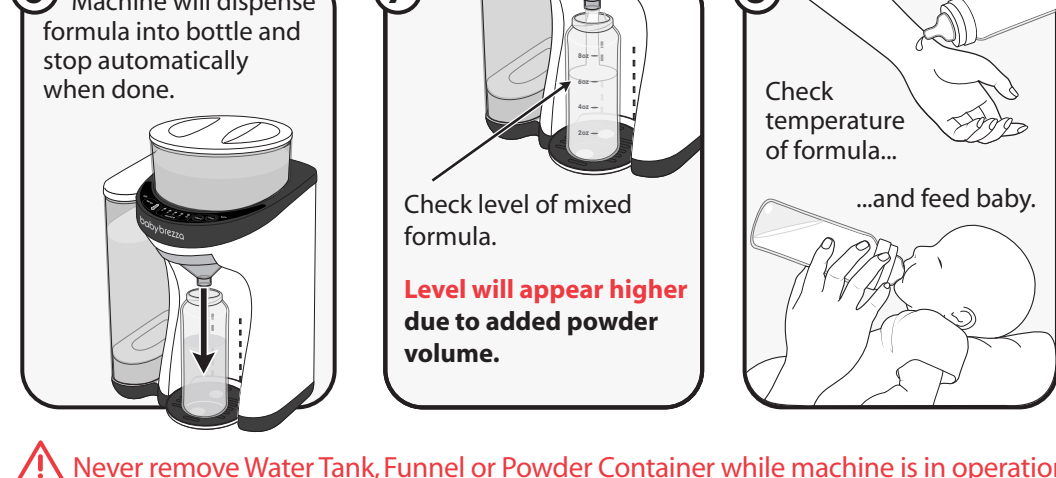
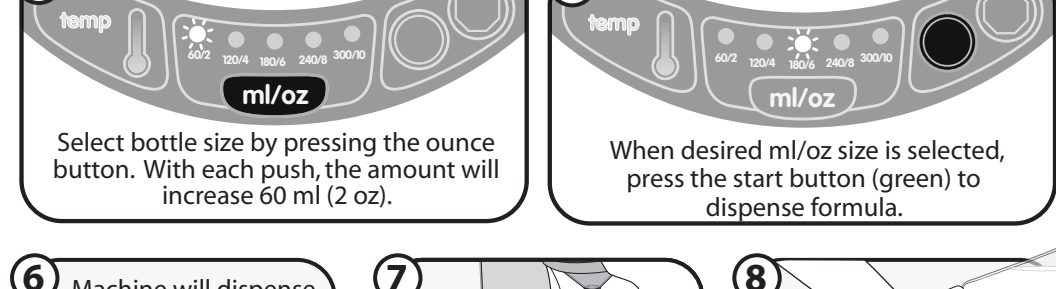
Measuring Insert Selection

Find your formula type below and place indicated insert in measuring wheel.

Formula Brand/Type	Insert #	Formula Brand/Type	Insert #
Sililac® Step 1		Baby's Only Organic®	
Iron Fortified	5	Dairy	4
Lower Iron	5	Dairy DHA & ARA	4
Advance® with Omega-3 & Omega-6	5	Soy	4
Sensitive to Lactose	4	LactoRelief™	4
Isomil® Soy Protein	4		
Isomil® with Omega-3 & Omega-6	5	Store Brand Formula	
Advance® NeoSure®	3	For the following store brands, use the insert indicated for the type of formula in the chart below.	
Alimentum®	4	America's Choice™, BabiesRU®, Baby basics®, Bear Essentials, Berkeley & Jensen® Baby Comforts™, Compliments Little Ones, CVS®, Giant®, Giant Eagle Baby, H-E-B Baby™, Home 360®™ Baby, Kuddles®, Life®, Little Ones™, Meijer™, Mom to Mom™, Mother's Choice, O™ Organics for Baby, Parent's Choice™, Rite Aid®, Safeway Select, Simply Right™, Top Care®, Up & Up®, Wegmans, Walgreens Well Beginnings™	
Sililac® Step 2		Formula Type	Insert #
Go & Grow® Calcium Enriched	5	Iron Fortified	4
Go & Grow® Omega-3 & Omega-6	4	Lower Iron	4
Isomil® Soy Protein	4	Omega 3 & 6	5
Nestlé®		Advantage	5
Good Start®	5	Added Rice	3
Good Start® Omega 3 + 6 Probiotic	5	Gentle	5
Good Start® Alsoy Omega 3 + 6	3	Newborn	5
Follow-Up®	3	Organic	3
Good Start® 2 added Iron & Calcium	5	Premium	5
Good Start® 2 Omega 3 + 6 GOS	5	Sensitivity	4
Good Start® 2 Alsoy Omega 3 + 6	4	Soy	1
Enfamil™		Nutramigen™ A+®	5
A+®	5	Enfapro™ A+® 2	4
A+® Gentlese®	5	Enfapro™ 2 Calcium & Iron	5
A+® Thickened	5	Earth's Best® Organic	
A+® Soy	3	Infant Formula • Milk	3
1 Iron Fortified	5	Infant Formula • Soy	3
1 Lower Iron	5		
Kirkland™ Signature - Infant	5		

Occasional clumping may occur due to the nature and composition of powdered formula. Always check for clumps and shake or stir the bottle if necessary.

Bottle Preparation Continued



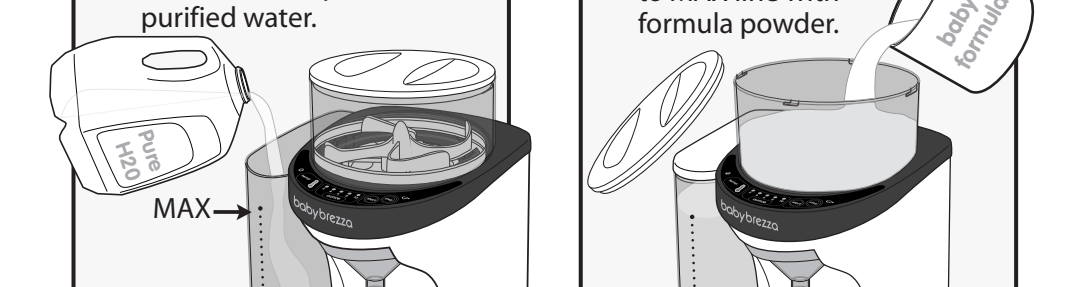
Never remove Water Tank, Funnel or Powder Container while machine is in operation.

After baby stops feeding from bottle, discard any leftover formula mixture. Always hold the baby during feeding. Never prop the bottle while baby to feed unsupervised.

Bottle Preparation

Before preparing a bottle with the Formula Pro®:

- Always use a clean and sterilized bottle, nipple or other feeding equipment.
- Wash and dry hands before handling sterilized bottles.
- Make each bottle as needed, and do not store mixed formula for later use.



Pour powder loosely and evenly into Powder Container. Do not pack powder inside or overfill Powder Container. Powder can be spread evenly with the 3 arms on the Powder Container Lid before closing.

Pour powder loosely and evenly into Powder Container. Do not pack powder inside or overfill Powder Container. Powder can be spread evenly with the 3 arms on the Powder Container Lid before closing.

Pour powder loosely and evenly into Powder Container. Do not pack powder inside or overfill Powder Container. Powder can be spread evenly with the 3 arms on the Powder Container Lid before closing.

Pour powder loosely and evenly into Powder Container. Do not pack powder inside or overfill Powder Container. Powder can be spread evenly with the 3 arms on the Powder Container Lid before closing.

Pour powder loosely and evenly into Powder Container. Do not pack powder inside or overfill Powder Container. Powder can be spread evenly with the 3 arms on the Powder Container Lid before closing.

Pour powder loosely and evenly into Powder Container. Do not pack powder inside or overfill Powder Container. Powder can be spread evenly with the 3 arms on the Powder Container Lid before closing.

Pour powder loosely and evenly into Powder Container. Do not pack powder inside or overfill Powder Container. Powder can be spread evenly with the 3 arms on the Powder Container Lid before closing.

Pour powder loosely and evenly into Powder Container. Do not pack powder inside or overfill Powder Container. Powder can be spread evenly with the 3 arms on the Powder Container Lid before closing.

Pour powder loosely and evenly into Powder Container. Do not pack powder inside or overfill Powder Container. Powder can be spread evenly with the 3 arms on the Powder Container Lid before closing.

Pour powder loosely and evenly into Powder Container. Do not pack powder inside or overfill Powder Container. Powder can be spread evenly with the 3 arms on the Powder Container Lid before closing.

Pour powder loosely and evenly into Powder Container. Do not pack powder inside or overfill Powder Container. Powder can be spread evenly with the 3 arms on the Powder Container Lid before closing.

Pour powder loosely and evenly into Powder Container. Do not pack powder inside or overfill Powder Container. Powder can be spread evenly with the 3 arms on the Powder Container Lid before closing.

Pour powder loosely and evenly into Powder Container. Do not pack powder inside or overfill Powder Container. Powder can be spread evenly with the 3 arms on the Powder Container Lid before closing.

Pour powder loosely and evenly into Powder Container. Do not pack powder inside or overfill Powder Container. Powder can be spread evenly with the 3 arms on the Powder Container Lid before closing.

Pour powder loosely and evenly into Powder Container. Do not pack powder inside or overfill Powder Container. Powder can be spread evenly with the 3 arms on the Powder Container Lid before closing.

Pour powder loosely and evenly into Powder Container. Do not pack powder inside or overfill Powder Container. Powder can be spread evenly with the 3 arms on the Powder Container Lid before closing.

Pour powder loosely and evenly into Powder Container. Do not pack powder inside or overfill Powder Container. Powder can be spread evenly with the 3 arms on the Powder Container Lid before closing.

Pour powder loosely and evenly into Powder Container. Do not pack powder inside or overfill Powder Container. Powder can be spread evenly with the 3 arms on the Powder Container Lid before closing.

Pour powder loosely and evenly into Powder Container. Do not pack powder inside or overfill Powder Container. Powder can be spread evenly with the 3 arms on the Powder Container Lid before closing.

Pour powder loosely and evenly into Powder Container. Do not pack powder inside or overfill Powder Container. Powder can be spread evenly with the 3 arms on the Powder Container Lid before closing.

Pour powder loosely and evenly into Powder Container. Do not pack powder inside or overfill Powder Container. Powder can be spread evenly with the 3 arms on the Powder Container Lid before closing.

Pour powder loosely and evenly into Powder Container. Do not pack powder inside or overfill Powder Container. Powder can be spread evenly with the 3 arms on the Powder Container Lid before closing.

Pour powder loosely and evenly into Powder Container. Do not pack powder inside or overfill Powder Container. Powder can be spread evenly with the 3 arms on the Powder Container Lid before closing.

Pour powder loosely and evenly into Powder Container. Do not pack powder inside or overfill Powder Container. Powder can be spread evenly with the 3 arms on the Powder Container Lid before closing.

Pour powder loosely and evenly into Powder Container. Do not pack powder inside or overfill Powder Container. Powder can be spread evenly with the 3 arms on the Powder Container Lid before closing.

Pour powder loosely and evenly into Powder Container. Do not pack powder inside or overfill Powder Container. Powder can be spread evenly with the 3 arms on the Powder Container Lid before closing.

Pour powder loosely and evenly into Powder Container. Do not pack powder inside or overfill Powder Container. Powder can be spread evenly with the 3 arms on the Powder Container Lid before closing.

Pour powder loosely and evenly into Powder Container. Do not pack powder inside or overfill Powder Container. Powder can be spread evenly with the 3 arms on the Powder Container Lid before closing.

Pour powder loosely and evenly into Powder Container. Do not pack powder inside or overfill Powder Container. Powder can be spread evenly with the 3 arms on the Powder Container Lid before closing.

Pour powder loosely and evenly into Powder Container. Do not pack powder inside or overfill Powder Container. Powder can be spread evenly with the 3 arms on the Powder Container Lid before closing.

Pour powder loosely and evenly into Powder Container. Do not pack powder inside or overfill Powder Container. Powder can be spread evenly with the 3 arms on the Powder Container Lid before closing.

Pour powder loosely and evenly into Powder Container. Do not pack powder inside or overfill Powder Container. Powder can be spread evenly with the 3 arms on the Powder Container Lid before closing.

Pour powder loosely and evenly into Powder Container. Do not pack powder inside or overfill Powder Container. Powder can be spread evenly with the 3 arms on the Powder Container Lid before closing.

Pour powder loosely and evenly into Powder Container. Do not pack powder inside or overfill Powder Container. Powder can be spread evenly with the 3 arms on the Powder Container Lid before closing.

Pour powder loosely and evenly into Powder Container. Do not pack powder inside or overfill Powder Container. Powder can be spread evenly with the 3 arms on the Powder Container Lid before closing.